



South Fox Island Review

2025 501(c)(3) Non-Profit Est. 2004 **Fox Island Lighthouse Association -FILA, P.O. Box 851, Traverse City MI 49684**



**SOUTH FOX ISLAND
LIGHT STATION**
LAKE MICHIGAN, USA



*Great Xmas ideas for the light in
your life! Get your South Fox mugs,
hats, t-shirts, books and more!*

Please visit



The SHOAL SHOPPE

www.TheShoalShoppe.com



SouthFoxLighthouse.org
southfoxisland@gmail.com



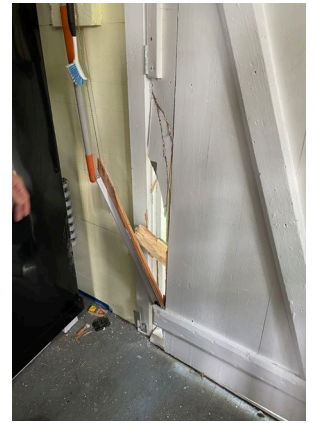
It takes a team

By President Linda Posler

As usual, South Fox Light Station had a busy summer season. From downed tree surprises at the opening trip to a final round of clearing at closing, both seasoned and novice volunteers put together an amazing effort, from our logistics coordinator and Vice President Cathy Allchin to the newest “brute strength” volunteer, Brett Neulsen (AKA Hank Erwin), who wields a mean paintbrush! As usual, our carpenter team (led by Board Member Jim Greenwell) made necessary repairs to keep the buildings intact for one more season. Our painting team (led by Treasurer Kathy Sanders) addressed both interior and exterior painting needs. Volunteer Mark Lee spent some time attacking the moss on the roof of the Assistant Keepers’ quarters as well. The intrepid engineering group (Marty Rosalik, Barb Falkenhagen and Board Member Tom McBride) worked their usual magic on the ongoing lantern room restoration, maintaining (and updating) the water system, and lending a hand on landscaping and brush cutting. Barb was a stellar member of the brush clearing team, joining with four women with chainsaws (Linda Posler, Cathy Allchin, Sandra White, and Barb) to clear both trees and brush under Fire-Master Tom’s watchful eye. Kudos, too, to Board Member Sandra White on leading her first island team, with many newcomers to the organization.

***Please check out current and past
restoration efforts at
southfoxlighthouse.org/restoration***

*“Never underestimate the power of a small
group of committed people to change the
world. In fact, it is the only thing that ever
has.”* Margaret Mead



DNR Support Appreciated!

This year, once again the DNR has provided help to transport a large amount of much needed materials to repair boat house. We were also able to remove some of the larger pieces of garbage off the station such as dead lawn mowers and rusted metal. Brute strength is often needed and DNR comes through!

Multi-talented Doug Noren Since 2010



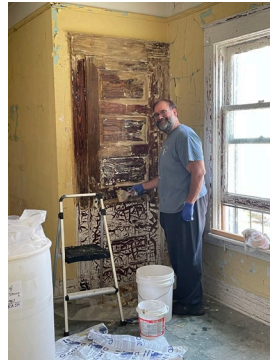
Doug and his wife Gwen have been two of our longest serving and most versatile volunteers over the years. Starting in 2010, they supplied transport to multiple teams aboard their able craft "Victory." "On Island," Doug helped complete the initial cleanup of the fog signal building, fixed mowers, performed masonry (rebuilding a downspout base on the Assistant Keepers), built window covers, removed recalcitrant metal window stops in the skeletal tower stairway, replaced missing panels in the skeletal tower lantern room....and more. Many of these projects required preparation, like bringing welding gas and gear to facilitate the stop removal project in the lantern room.

In recent years, Doug has focused on "winter projects," recreating items for installation by others. He rebuilt several of the metal stops for the skeletal tower windows. He built the final three pairs of shutters for the 1867 lighthouse and recreated a missing tower cupboard door. He most recently recreated a missing kitchen drawer and trellis for the Assistant Keeper's Quarters.

Thank you, Doug, for all the magic you do!

Please support restoration
Southfoxlighthouse.org/donate

2025



Completed Projects

Assistant Keepers Quarters

Milled wood for floor and molding repair and completed repairs begun in 2024
Rebuilt and installed missing pantry cabinet drawer
Cleared moss from roof and gutters

1867 Lighthouse

Prepped and painted front portion of first floor, including bathroom
Repaired and replaced rotting soffits
Secured loose tower shutter and replaced broken tower windowpane
Repainted exterior window trim and basement entry doors
Installed Lexan panels to continue lantern room restoration

Summer Kitchen

Repaired storm damage to rear entry and cleared fallen tree
Replaced rotten flooring & subfloor
Replaced and re-painted cracked front soffit

Skeletal Tower

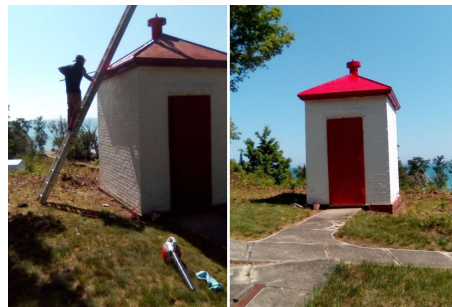
Restored entry and parapet door latch mechanisms

Oil House

Painted roof & door

Grounds

Cleared trees and branches from winter storm damage
Edged over 600 feet of sidewalks
Removed aging trees endangering various structures
Repainted shed
14 trips to the station.



2026 Looking Ahead

Thousands of volunteer hours are spent just maintaining the grounds and basic operations. Below is a list of our major projects for 2026.

Re-side Boathouse

Paint floor Summer Kitchen

Repair ceiling Summer Kitchen

Continue Lead Remediation

Restore Woodwork

Replace vent ball in Lighthouse

Replicate brass vent covers

Continue moss removal AK

Plaster repair-1867 Lighthouse

Remove/trim trees

Maintain landscape

Organize inventory

Wish List

Stump grinder \$2000

Replace Vent Ball \$5000

Battery-powered tools for
Landscape Maintenance

In planning next year's projects, there are items that are necessary to continue restoration. As an all-volunteer organization, we rely on financial support to pay for out-of-pocket expenses. You have always been very supportive, and any amount is greatly appreciated!
We need your financial support to make it happen.



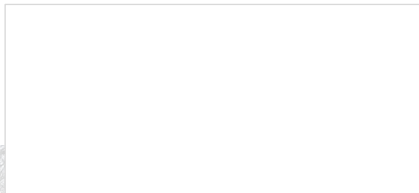
Welcome FILA New Board Member

Join us in welcoming **Barb Falkenhagen**

Barb is a long-time volunteer with extensive lighthouse restoration experience having worked on Crisp Point Lighthouse, Saginaw River Rear Range Light and Spectacle Reef Light Station, and Frankfort North Pier Light. She brings a wealth of knowledge and a passionate heart to the station and she's a lot of fun to boot!



PO Box 851, Traverse City
MI 49684



Fishing was allowed by Keepers but only after all chores were completed. Above is a Lighthouse boat at the station from 1918, courtesy of Kathy Firestone.

We Can't Do It Without YOU!

When we first visited the station, it had been ignored for over 25 years. It was rough. Buildings were falling and crumbling. It seemed a dauntless task and yet we have persevered. We have been slowly bringing new life to a forgotten treasure but only through your donations and support. We believe what we do is important. Once historic buildings are gone they will never be replaced, and history will be forgotten. We are the fire; you are the fuel.

Thank you for your support!



SCAN ME

[Southfoxlighthouse.org/donate](https://southfoxlighthouse.org/donate)



LIKE/SHARE *History is everyone's story.*

What lighthouse has an elevator?

Only lighthouse with an elevator – The Sullivan's Island Lighthouse in Charleston, South Carolina, completed in 1962, was the last major lighthouse built by the federal government.

